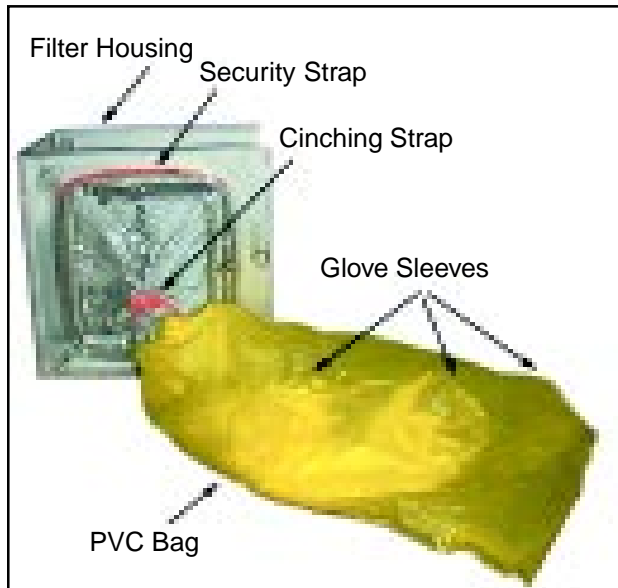


### PVC Change-Out Bags



**PVC Change-Out Bag on filter housing with security strap on the bag-in/bag-out port and cinching strap pulled taut around gathered bag.**

Flanders/CSC replacement bags are required to safely change-out filters that are installed in bag-in/bag-out housings.

The Flanders/CSC change-out bag is translucent and yellow in color with a clear section at the attachment end for change-out viewing.

An initial set of bags is provided with each Flanders/CSC housing. Replacement bags should be supplied when filters are changed-out.

### Security Strap

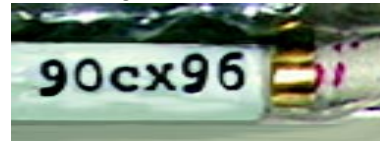


The nylon security strap helps hold the bag on the lip of the bag-in/bag-out port.

The security strap is buckled with a D-ring and has Velcro strips to secure the end.

### Specifications are as follows:

- Each bag has its stock number rolled into the hem.



- The PVC material is 8 mil thick, yellow in color, and has a translucent taffeta-textured finish that will not stick together.
- The PVC bags are tested by an independent laboratory to prove the bag's operability at extreme temperature ranges of 0°F - 130°F. *(A test report verifying this testing can be furnished upon request.)*
- The bag has approximately 16 inches of clear PVC at the mouth, for visibility during change-out.
- Three (3) glove sleeves are built into the bag to facilitate handling of the filter during change-out.
- The elastic shock cord is hemmed into the mouth of the bag so that it fits securely when stretched around the bag-in/bag-out port.

### Cinching Strap

The nylon cinching strap prevents the bag from being drawn into the housing during normal



operation. The strap is tied at a point near the lip of the bag-in/bag-out port, drawing the bag tightly across

the port and allowing the slack to fall off to the side. The slack of the bag will be contained behind the housing access door.

## Replacement Bags and Straps

When replacement or extra stock change-out bags and straps are required, Flanders/CSC offers a wide variety of standard sizes. These bags and straps are kept in stock for quick deliveries.

Flanders/CSC also offers an assortment of special size bags and straps that fit containment housings that are no longer manufactured.

To provide these special or custom size accessories, the following information is required for:

- Bags:**
- material of construction
  - length
  - bag circumference  $\frac{3}{4}$  can be determined by measuring the housing bag-out port

- Straps:**
- length



PVC Change-Out Bag in place with shock cord on the bag-in/bag-out port and orange nylon security strap buckled with D-ring and fastened with Velcro

# Flanders / CSC®

**FLANDERS/CSC CORPORATION**

7013 Hwy 92E - PO Box 3

Bath, NC 27808

Tel: 252-923-2911 Fax: 252-923-6931

Email: [csc@csc.flanderscorp.com](mailto:csc@csc.flanderscorp.com)

Web site: [www.flanders-csc.com](http://www.flanders-csc.com)

Standard Flanders/CSC Bags	
Bag Size	Part No.
44C x 54	11-100
48C x 54	11-109
54C x 54	11-101
60C x 72	11-110
64C x 72	11-102
70C x 72	11-103
73C x 96	11-111
80C x 96	11-104
84C x 96	11-112
90C x 96	11-105
93C x 96	11-113
96C x 96	11-106
104C x 96	11-107
116C x 96	11-114
122C x 96	11-108
FFI Replacement Bags	
Bag Size	Part No.
70C x 108	11-009
80C x 108	11-032
90C x 108	11-017
98C x 108	11-022
104C x 108	11-025
116C x 108	11-027

Standard Flanders/CSC Straps	
Strap	Part No.
Primary Security (GG/GC)	11-033
Prefilter Security (GG/GC)	11-034
Cinching	11-036
Primary Security (CC/CG)	11-034
Prefilter Security (CC/CG)	11-071
Security G-Series (CC)	11-034
Security G-Series (GG)	11-038
FFI Replacement Straps	
Strap	Part No.
77" Security	11-300
99" Security	11-302

**Note:** The PVC bags have been tested by an independent laboratory to prove the bag's operability at extreme temperature ranges of 0°F - 130°F.

*A test report verifying this testing will be furnished upon request.*